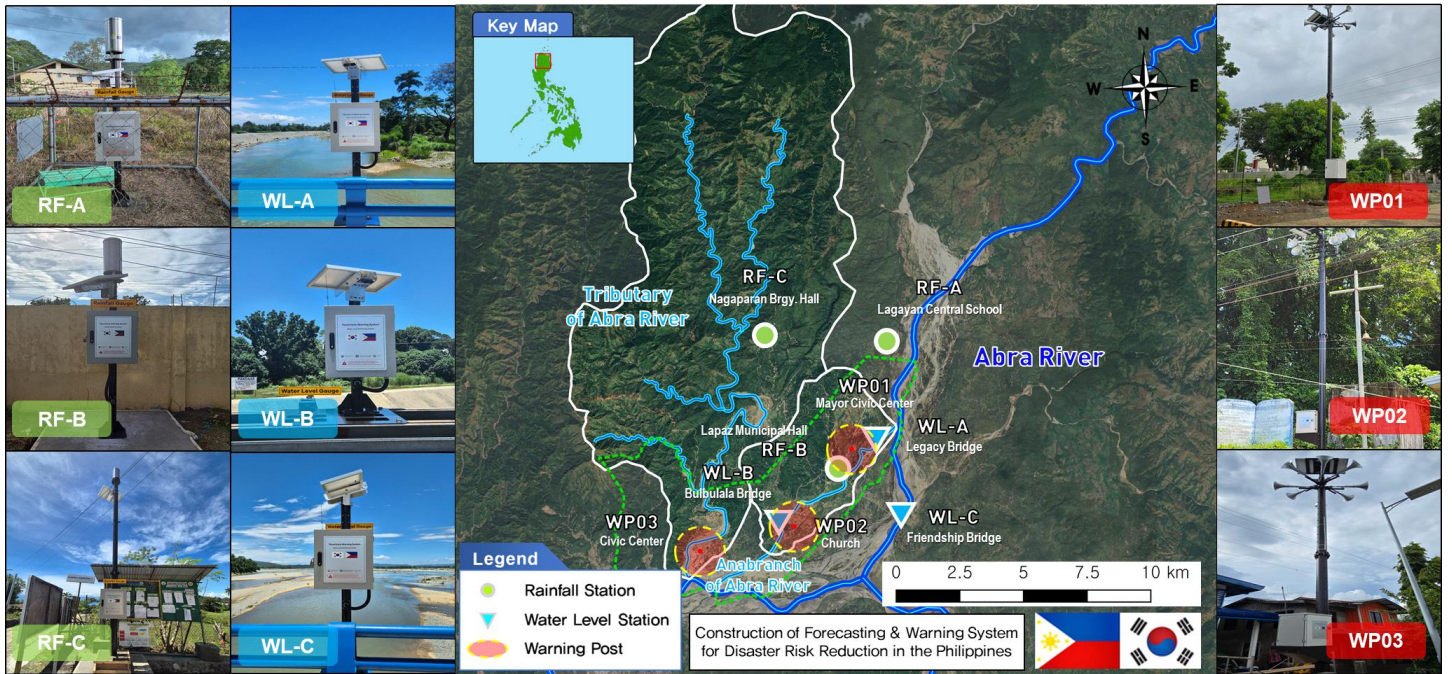


# La Paz's River Basin in 2024



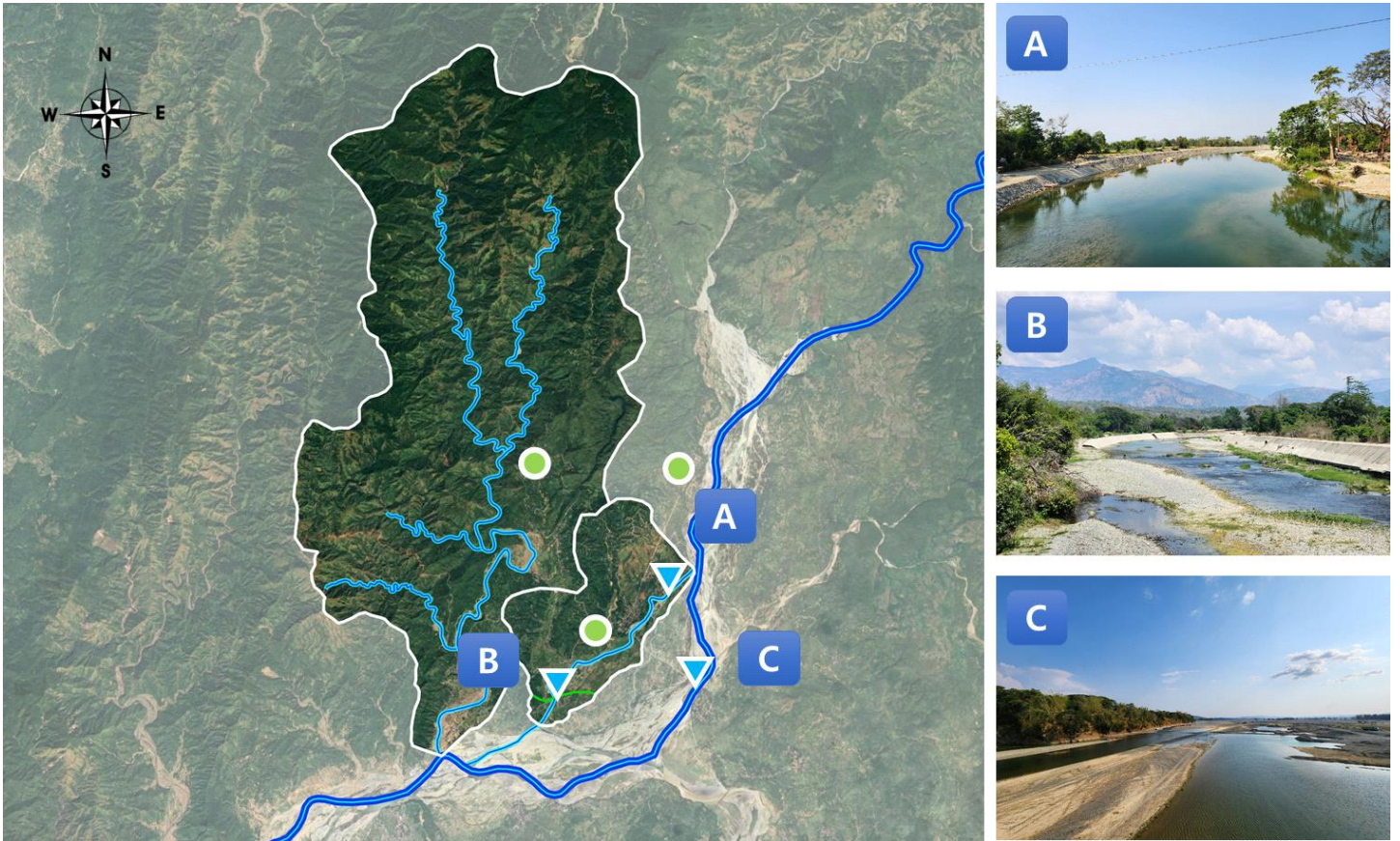
## ○ Characteristics of Watershed

River	Area (km <sup>2</sup> ) - A	Length (km) - L	Width (km) - A/L	Shape factor - A/L <sup>2</sup>
Tributary	160.8	31.8	5.06	0.16
Anabranche	23.3	8.3	2.81	0.34

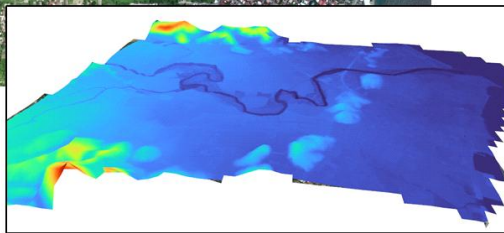
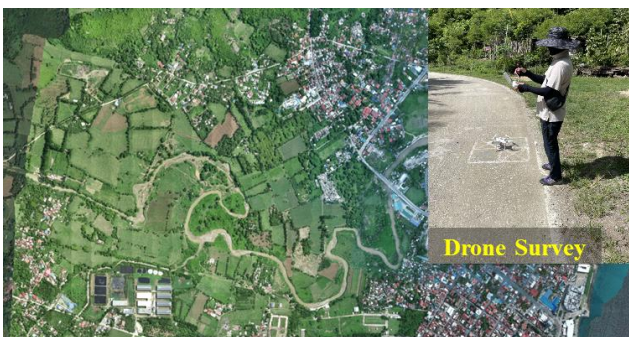
## ○ Location of Equipment

Basin	Division	Qty	Location	Latitude	longitude
Abra	Water Level Gauge	1	Friendship Bridge	17°39'16.2"N	120°42'27.3"E
Tributary	Rainfall Gauge	1	Nagaparan Barangay Hall	17°43'05.4"N	120°39'00.0"E
	Warning Post	1	Civic Center	17°38'29.7"N	120°38'03.2"E
Anabranche	Water Level Gauge	2	Legacy Bridge	17°40'52.4"N	120°41'53.8"E
			Bulbulala Bridge	17°39'03.0"N	120°39'50.5"E
	Rainfall Gauge	2	Lagayan Central School	17°43'09.4"N	120°42'19.2"E
			Lapaz Municipal Hall	17°40'15.1"N	120°41'00.3"E
	Warning Post	2	Mayor Ching Bernos Civic Center	17°40'42.9"N	120°41'17.9"E
Church			17°39'04.1"N	120°40'0.8"E	

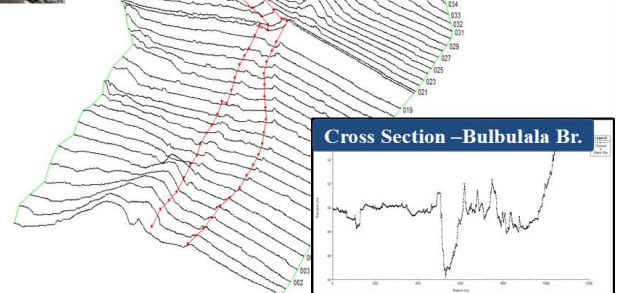
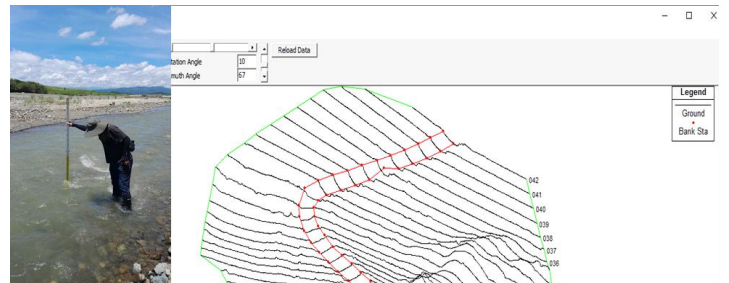
## ○ Characteristics of Basins



## ○ River Survey



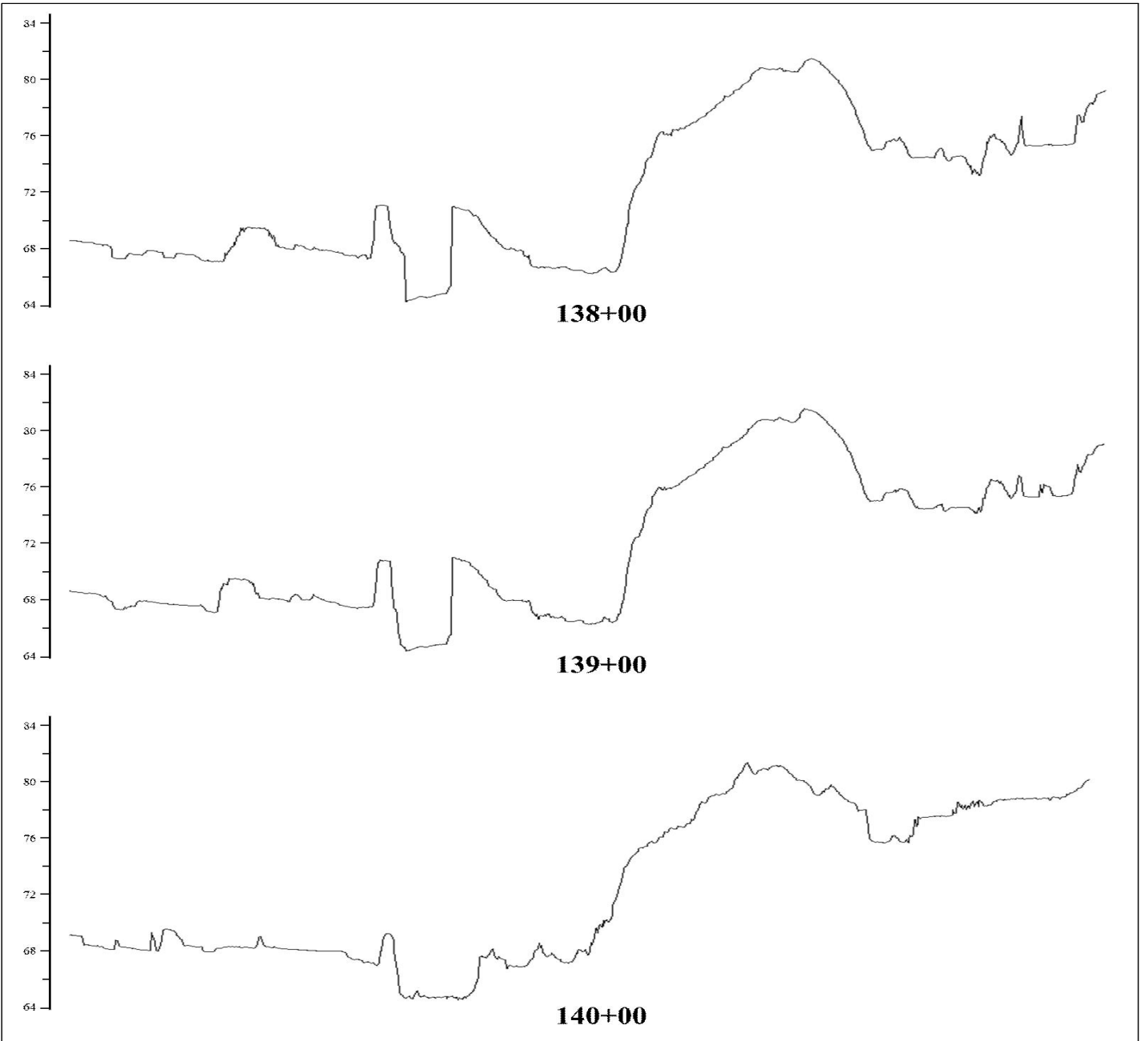
〈Drone Survey〉



〈Cross Section Survey〉

- Drone survey was performed to get the D.E.M(more than 10.0km<sup>2</sup>) of La Paz municipality
- Cross section survey was performed to get the cross sections(220 sections) in the sector of Tributary and Anabranh of Abra river. (Total 40.1km)

► Cross section (WL-A Section)



► Cross section (WL-B Section)

