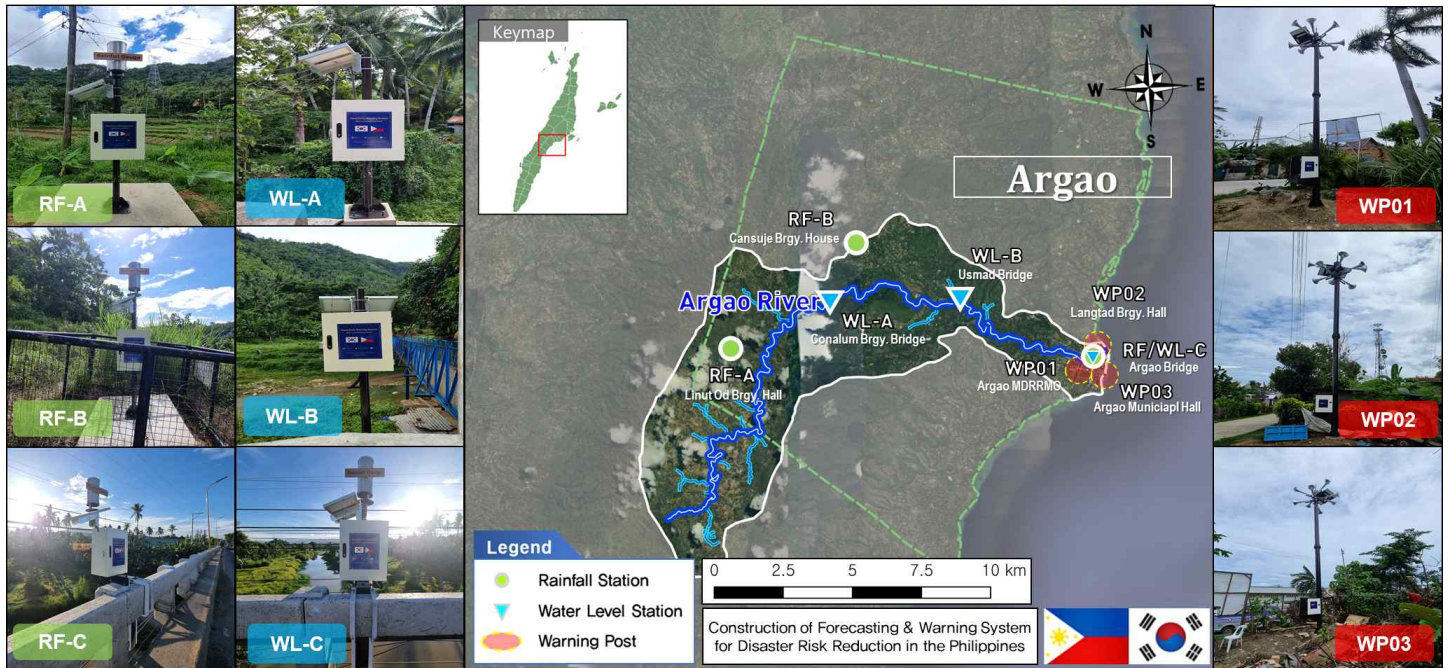


# Argao River Basin in 2023



## ○ Characteristics of Watershed

Area (km <sup>2</sup> ) - A	Length (km) - L	Width (km) - A/L	Shape factor - A/L <sup>2</sup>
82.8	31.8	2.60	0.08

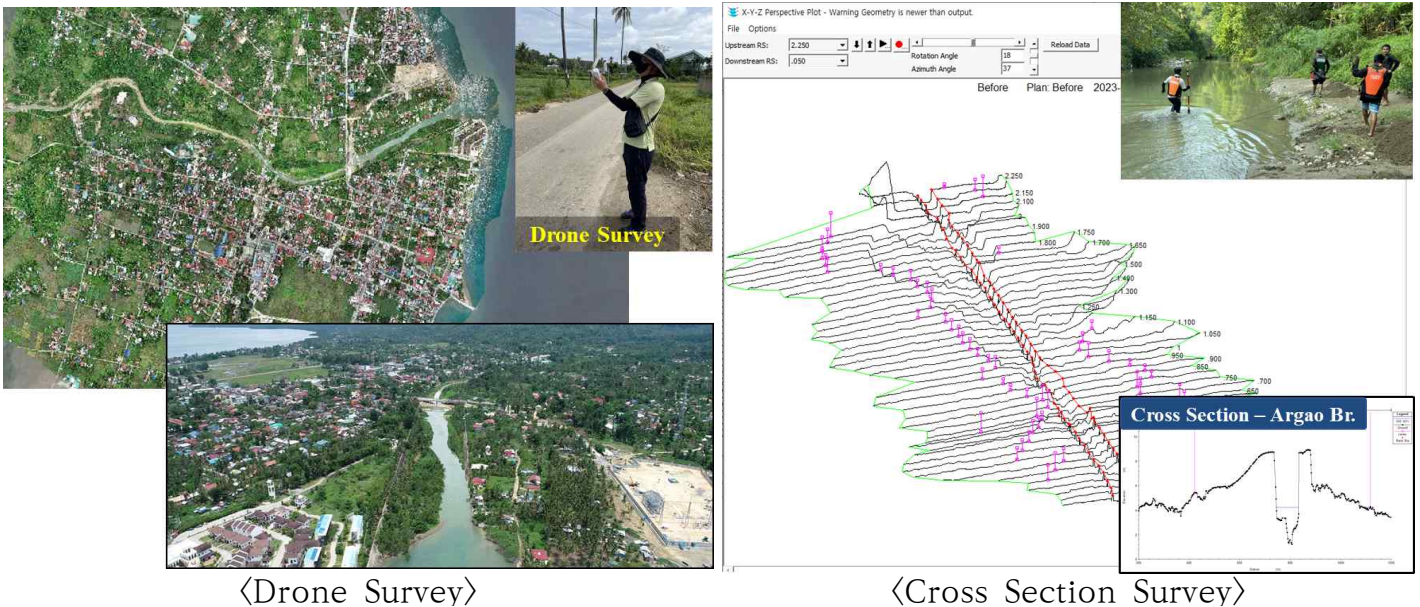
## ○ Location of Equipment

Basin	Division	Qty	Location	Latitude	longitude
Argao River	Warning Post	3	Argao MDRRMO	9.882N	123.601E
			Langtad Brgy. Hall	9.890N	123.606E
			Argao Municipality Hall	9.881N	123.608E
	Rainfall Gauge	3	Linut Od Brgy. Hall	9.889N	123.487E
			Nearby Cansuje Brgy. Hall	9.923N	123.526E
			Argao Bridge	9.886N	123.605E
	Water Level Gauge	3	Conalum Brgy. Bridge	9.904N	123.519E
			Usmad Bridge	9.904N	123.561E
			Argao Bridge	9.886N	123.605

## ○ Characteristics of Sub Basins



## ○ River Survey



- Drone survey was performed to get the D.E.M(more than 4.0km<sup>2</sup>) of Argao municipality
- Cross section survey was performed to get the cross sections(138 sections) in the sector of 3 WL station of Argao river. (Total 6.5km)

► Cross section (WL-C Section)

